

DCED, Governor's Center for Local Government Services (CLGS)

A Resource for COG's



Who Are We?

CLGS Staff



The Governor's Center for Local Government Services (GCLGS) is a **one-stop shop for local government officials** and provides a wealth of knowledge and expertise on all matters affecting local government operations throughout Pennsylvania.

How Can We Help?

Technical & Financial Assistance

We provide a full range of vital programs, training, and services to resolve problems at the local level.

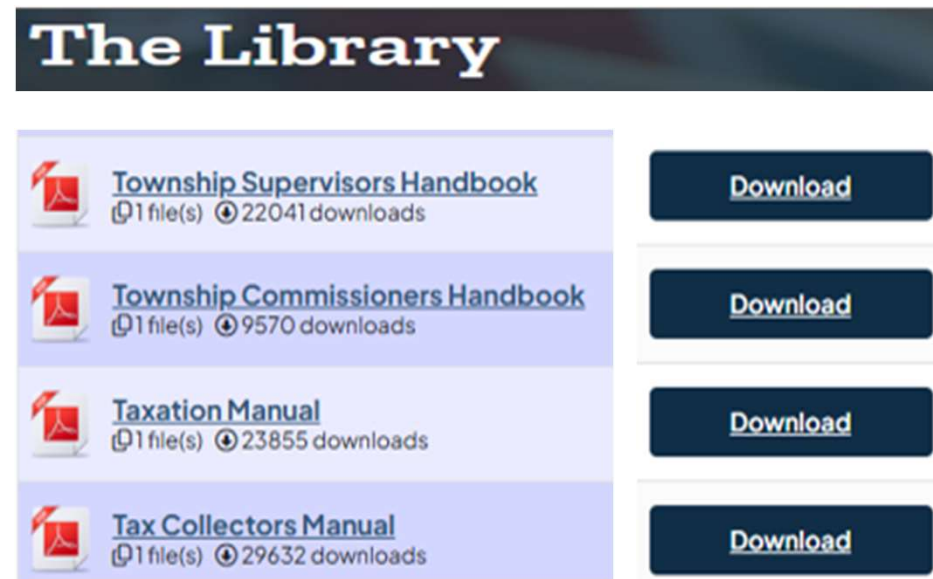
Our **technical and financial assistance programs** support local governments with revitalization, recovery, planning, and more.







Handbooks, Reference Manuals & Guides

We offer more than 50 online publications about all aspects of local government administration, including planning, fiscal management, local taxes, municipal codes, and regulations.

View, download, or order copies at dced.pa.gov/publications.



The Library

 Township Supervisors Handbook 1 file(s) 22041 downloads	Download
 Township Commissioners Handbook 1 file(s) 9570 downloads	Download
 Taxation Manual 1 file(s) 23855 downloads	Download
 Tax Collectors Manual 1 file(s) 29632 downloads	Download

Training

DCED Core Trainings

- Chart of Accounts
- Budget and Finance
- ESA Grants
- Organization Meeting Prep
- Year End Reporting
- Elected Auditor Training
- Public Safety
- Community Planning



Financial Recovery

Act 47: Municipalities Financial Recovery Act

We provide financial management and technical assistance to aid in the recovery process for municipalities experiencing severe financial difficulties. Financial assistance is available through the Distressed Municipalities Revolving Fund.
dced.pa.gov/act47

Strategic Management Planning Program (STMP)

STMP helps municipalities improve their financial position using best management practices. A plan is created after a thorough review of finances, operations and conversations with the municipality. Grants are then available to implement recommendations.

dced.pa.gov/STMP

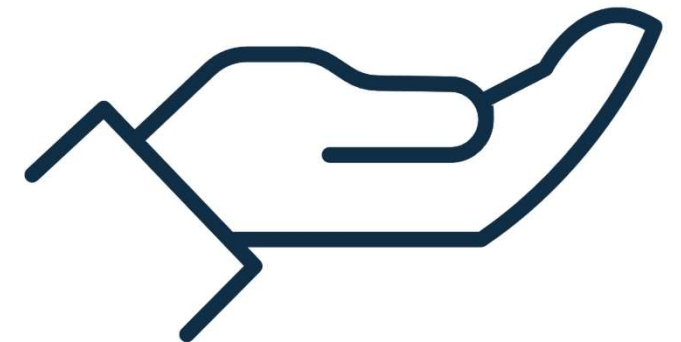
Funding Programs

Local Government Capital Project Loan Program (LGCPLP)

Eligible municipalities can get loans at a fixed, low-interest rate of 2% to purchase equipment and facilities. dced.pa.gov/LGCPLP

Municipal Assistance Program (MAP)

Grants cover up to 50% of eligible costs related to community planning and shared services. dced.pa.gov/MAP



Shared Services

Regional Police Services

Our network of peer consultants work with municipalities to regionalize police services.

dced.pa.gov/police

Regional Fire / Emergency Medical Services

We help municipalities with technical and financial assistance to support regionalization of fire and emergency services.

dced.pa.gov/fire



Planning



Community Planning

We offer technical and financial assistance to help with land use, revitalization, preservation, and infrastructure.

dced.pa.gov/planning

C-TAP Technical Assistance

Our Planning Specialists located within each region offer direct technical support, up to 400 hours, to municipalities for specific planning and zoning projects.

COGs and Regional Planning

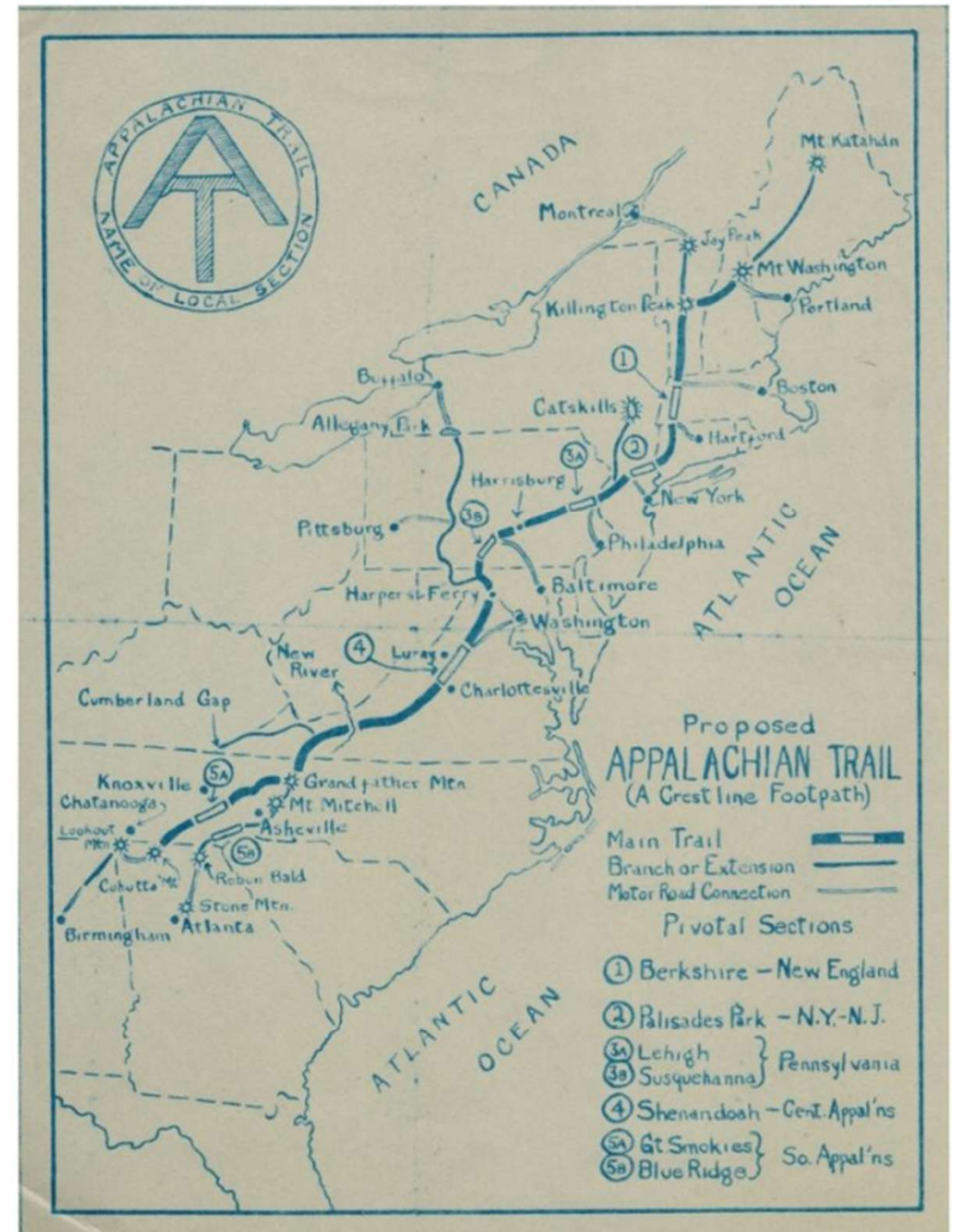
Regional Approaches to Planning

What is regional planning?

Planning that crosses jurisdictional boundaries for a shared purpose. (ie multi-municipal, multi-county, multi-state)



Benton MacKaye (left) Myron Avery (right). Photo courtesy of the Appalachian Trail Conservancy.



An early vision of the AT proposed by Benton MacKaye to the Appalachian Trail Conference in Washington March 1925. Courtesy of the Appalachian Trail Conservancy.

Models of Regional Planning

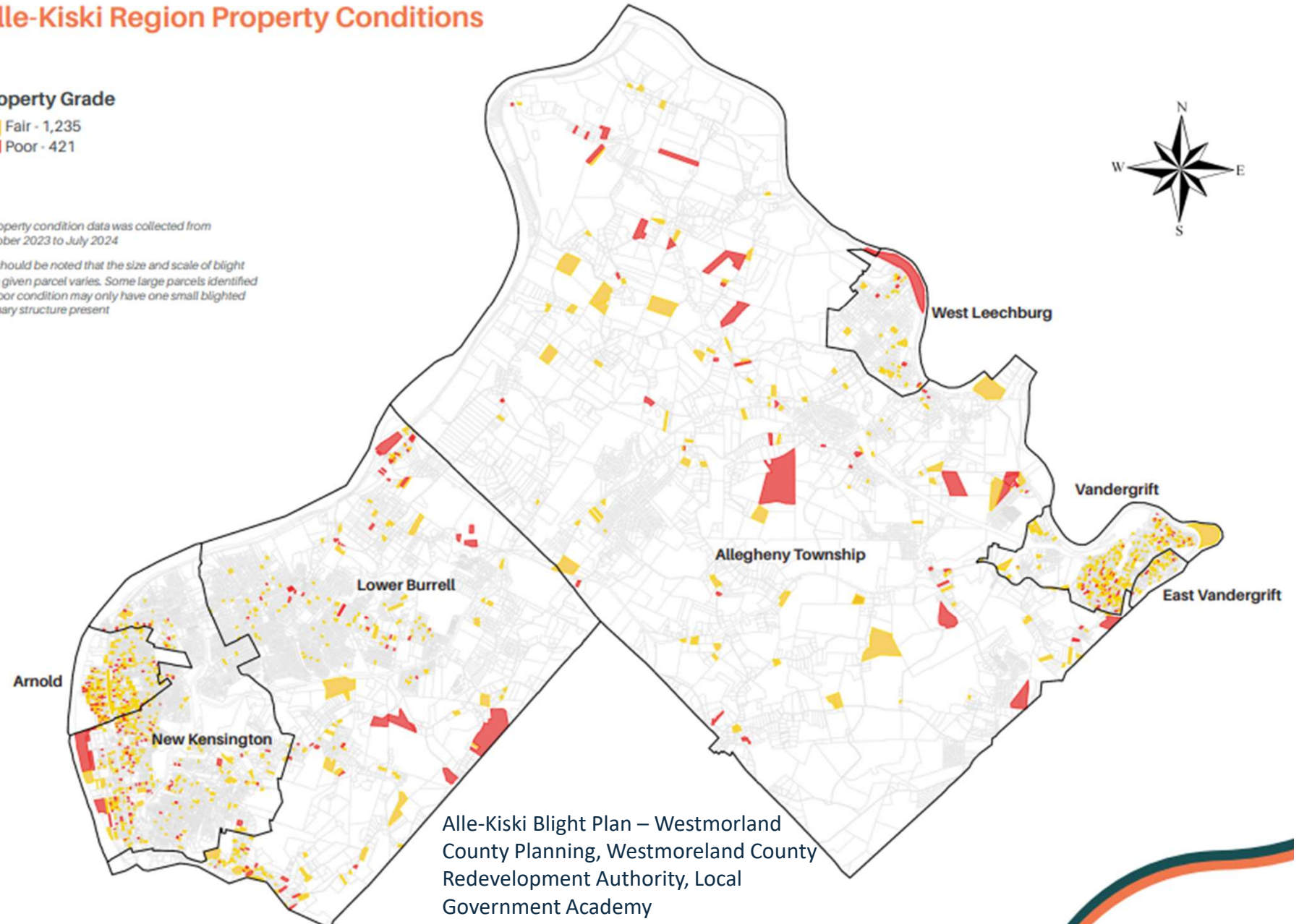
Alle-Kiski Region Property Conditions

1. County-wide
2. MPO/RPOs
3. Multi-Municipal
4. COG initiated
5. Public-Private coordinated planning

Property Grade

Fair - 1,235
Poor - 421

** Property condition data was collected from October 2023 to July 2024*
** It should be noted that the size and scale of blight on a given parcel varies. Some large parcels identified in Poor condition may only have one small blighted primary structure present*



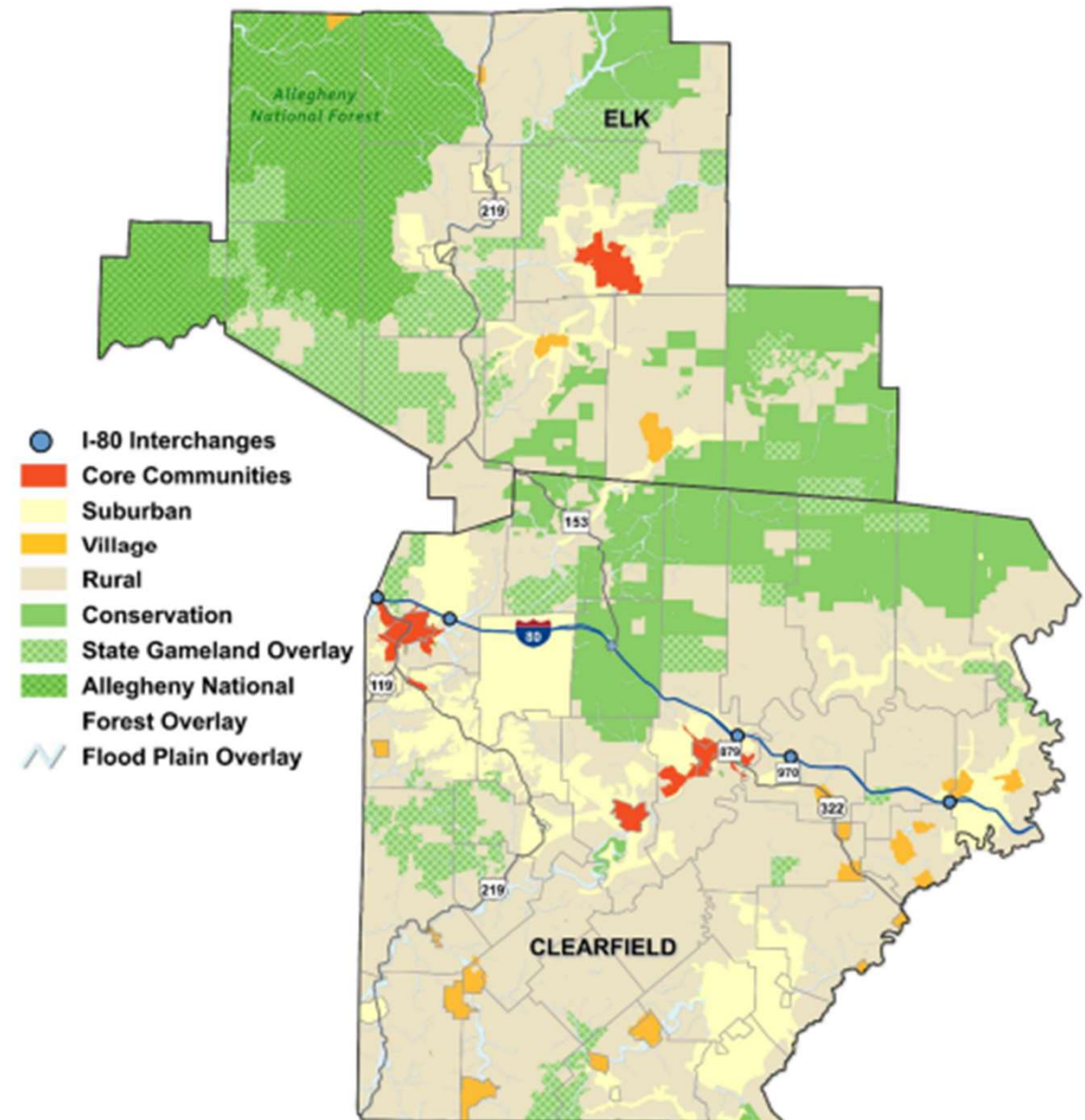
Alle-Kiski Blight Plan – Westmorland County Planning, Westmoreland County Redevelopment Authority, Local Government Academy



Benefits of Regional Planning

1. Sharing of costs
2. Convening regional partners, often for the 1st time
3. Build a larger coalition of advocates for shared goals
4. Allows for efficient coordination of programs
5. Improves competitiveness for funding

Figure 40: Clearfield and Elk Counties Future Land Use



Challenges of Regional Planning

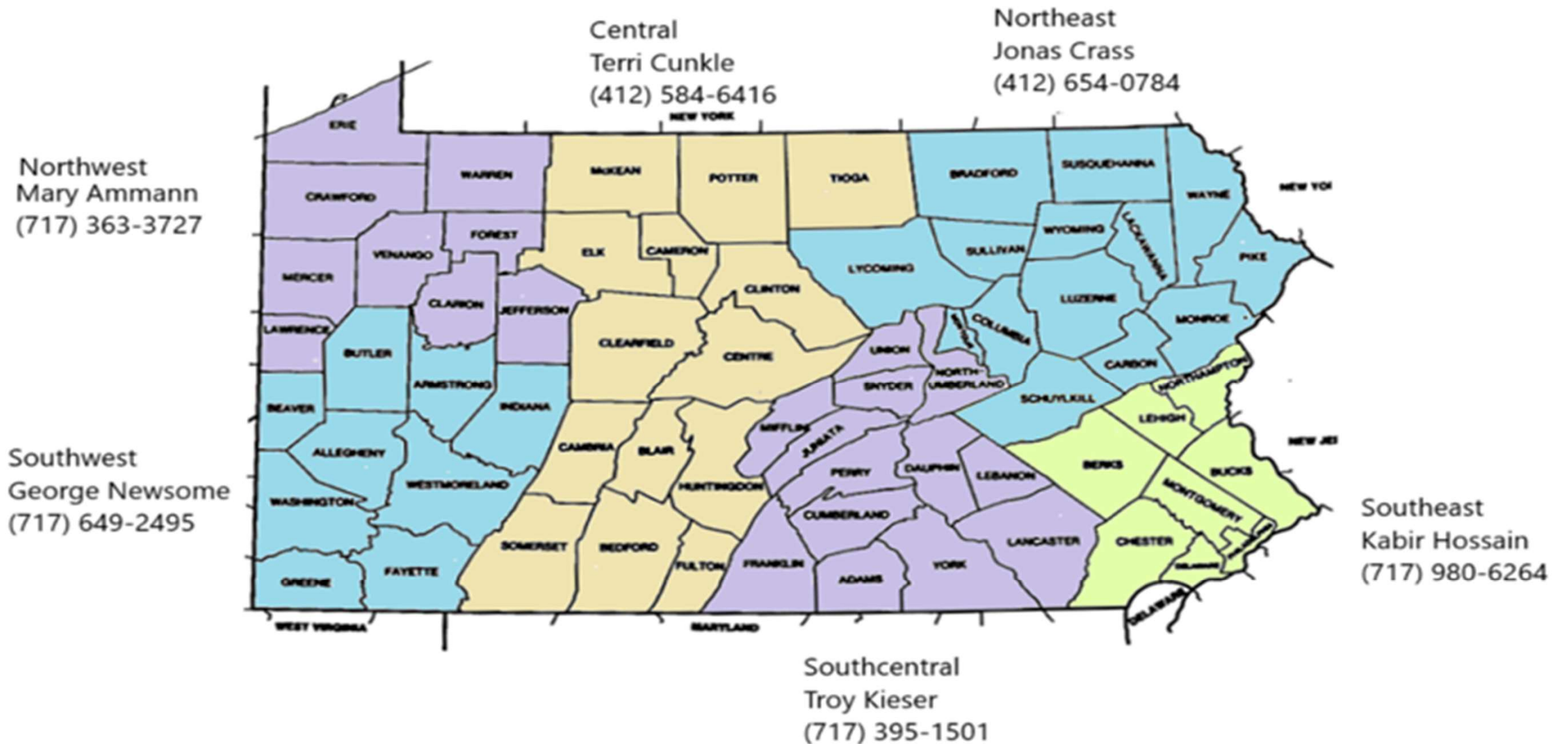
1. Level of trust to work together
2. Limited resources (time or funding) to support planning
3. Range of interests may be unmanageable
4. Lack of authority to implement plan
5. Frequency in leadership changes
6. No mandates to follow a plan

Craft public policy that aligns with the vision, priorities, and resources of Crawford Inspired

- Establish a Local Economic Revitalization Tax Assistance (LERTA) policy that aligns with Crawford Inspired and the Character Area Map.
- Engage the cities and boroughs that are identified as priority areas for redevelopment.
- Coordinate with municipalities on planning districts to ensure planning efforts across municipal boundaries and to strengthen funding applications.
- Create design toolkits and guides to articulate, visualize and realize desired buildings, spaces and places.
- Establish annual legislative roundtable discussions hosted by the Board of Commissioners with municipalities, State representatives, and Community-Based Organizations to develop a list of key legislative policy initiatives that impact Crawford County.
- Explore the creation of a one-stop shop approach to development in Crawford County which may include the creation of a county-wide SALDO.

Get in Touch

Regions



Northwest Region



Mary Ammann

Local Government Specialist

mammann@pa.gov

717-363-3727

Counties Served

- Clarion
- Crawford
- Erie
- Forest
- Jefferson
- Lawrence
- Mercer
- Venango
- Warren

Southwest Region



George Newsome

Local Government Specialist

gnewsome@pa.gov

412-565-7970

Counties Served

- Allegheny
- Armstrong
- Beaver
- Butler
- Fayette
- Green
- Indiana
- Washington
- Westmoreland

Central Region



Terri Cunkle

Local Government Specialist

tcunkle@pa.gov

412-584-6416

Counties Served

- Bedford
- Blair
- Cambria
- Cameron
- Centre
- Clearfield
- Clinton
- Elk
- Fulton
- Huntingdon
- McKean
- Potter
- Somerset
- Tioga

Northeast Region



Jonas Crass

Local Government Specialist

jcrass@pa.gov

412-654-0784

Counties Served

- Bradford
- Carbon
- Columbia
- Lackawanna
- Luzerne
- Lycoming
- Monroe
- Montour
- Pike
- Schuylkill
- Sullivan
- Susquehanna
- Wayne
- Wyoming

Southeast Region



Kabir Hossain

Local Government Specialist

khossain@pa.gov

717-441-7195

Counties Served

- Berks
- Bucks
- Chester
- Delaware
- Lehigh
- Montgomery
- Northampton
- Philadelphia

Southcentral Region



Troy Kieser

Local Government Specialist

tkieser@pa.gov

717-720-1375

Counties Served

- Adams
- Cumberland
- Dauphin
- Franklin
- Juniata
- Lancaster
- Lebanon
- Mifflin
- Northumberland
- Perry
- Snyder
- Union
- York

Q&A



Pennsylvania

**Department of Community
& Economic Development**

dced.pa.gov

